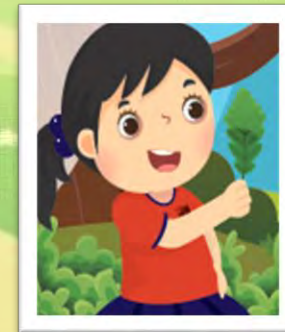
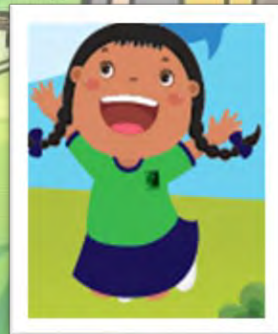




Peiying Primary School

Welcome to Parents Briefing for P3 and P4 Level

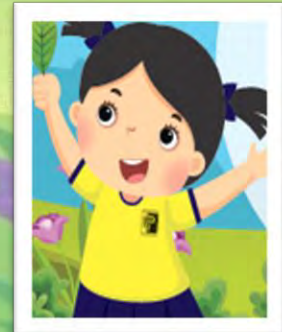
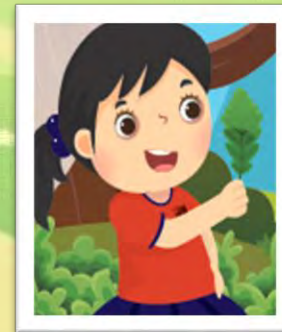
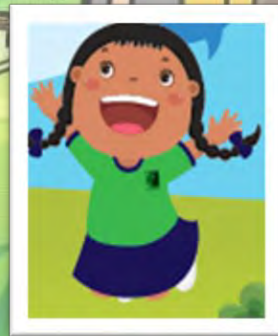
2 Feb 2024, Friday
3.00p.m.-4.30p.m.





Peiying Primary School

Programme



Building Character, Enriching Lives, Stretching Potential



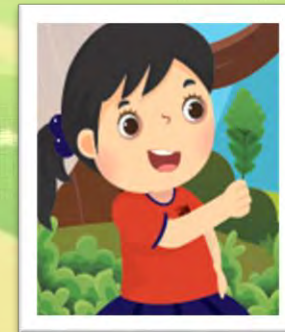
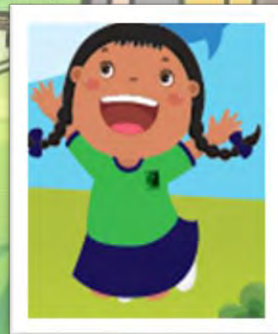
- **Welcome Address by School Leader**
- **Briefing by Year Head (Middle Primary)**
- **Briefing by Form & Co-Form Teachers**





Peiying Primary School

Welcome Address by School Leader



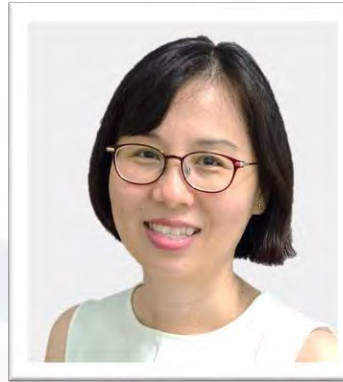
Building Character, Enriching Lives, Stretching Potential



School Leaders



Ms Ng Pei Sun
Vice-Principal
(Academic)



Mrs Peh-Wong Wei Yong
Principal



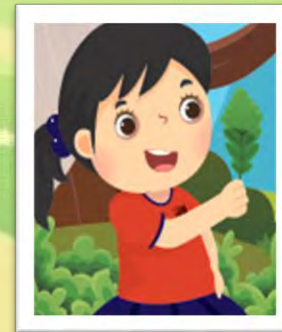
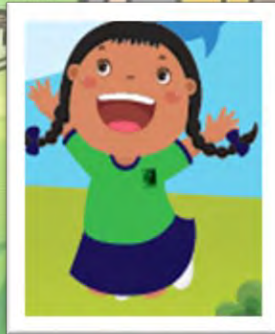
Mr Abdul Rani Idris
Vice-Principal
(Academic)





Peiying Primary School

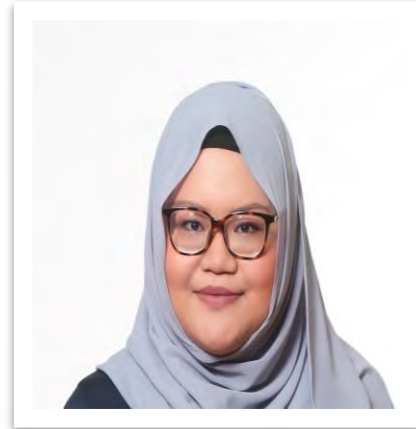
Key Personnel



Building Character, Enriching Lives, Stretching Potential



Ms Poh Mei Cheng
Year Head (MP)



Mrs Asyaari
Level Coordinator
(MP)

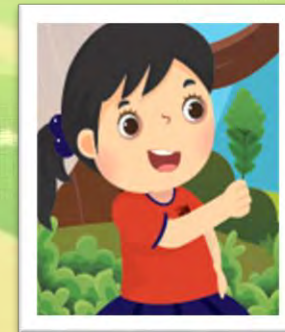
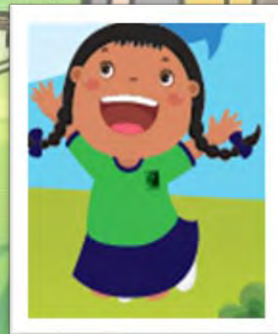




Peiying Primary School

Vision, Mission, Core Values

Student Vision Outcomes



Building Character, Enriching Lives, Stretching Potential



Vision

LIFELONG LEARNERS, LEADERS OF CHARACTER



We aspire to meaningfully pique our students' interest in their learning and encourage them to be lifelong learners.

We focus on character-building and leadership development of our students and are guided by our school values: PRIDE





Mission

- **B**uilding Character
- **E**nriching Lives
- **S**tretching Po**T**ential





Core Values

- P** Perseverance
- R** Respect
- I** Integrity
- D** Diligence
- E** Empathy





Core Values (P3 P4 Levels)

P Perseverance

I will not give up when I face problems.
I find different ways to solve problems using a growth mindset.

R Respect

I speak politely and I am kind to others.
I listen attentively and respect the opinions of others.

I Integrity

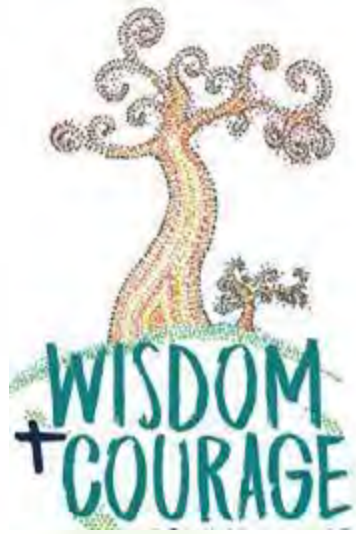
I will tell the truth and do the right thing.
I know what is right from wrong.
I learn to make good choices.

D Diligence

I complete my work carefully and hand in work on time.
I put effort into my work, and I am independent learner.

E Empathy

I take care of others.
I help others.
I care for the environment and take actions to conserve the environment.



School Motto

- **Wisdom & Courage**
 - Wisdom to choose,
 - Courage to do the right thing.





**Engaged
Learners**

**Resilient
Learners**

**Student Vision
Outcomes**

**Leaders of
Character**

**Caring
Citizens**





Student Vision Outcomes



ALP



English Enrichment Programme



P.L.A.Y. Day

Engaged Learners

- Show curiosity for learning
- Work with others respectfully
- Take responsibility for their own learning
- Think critically and communicate confidently





Student Vision Outcomes

Resilient Learners

- Develop a growth mindset towards learning
- Stay focused and persevere when faced with difficulties
- Reflect on their thoughts and actions and learn from mistakes
- Adapt and explore different solutions to respond to challenges



LLP



House Practice





Student Vision Outcomes



Leadership Training



JSLs at Investiture



Prefects at Investiture

Leaders of Character

- Demonstrate strong PRIDE values
- Know right from wrong
- Know their strengths and areas for growth
- Lead confidently





Student Vision Outcomes

Caring Citizens

- Know and love Singapore
- Show kindness and graciousness to people around us
- Demonstrate sensitivity to customs and cultural practices in Singapore
- Demonstrate awareness and participate actively in school and community events
- Adopt healthy habits, develop an awareness of the arts and care for the environment



Museum-Based Learning Journey



P4 VIA



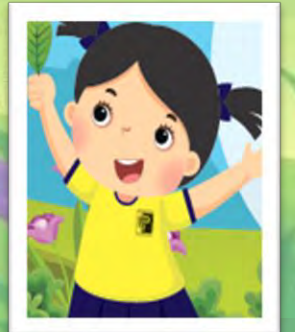
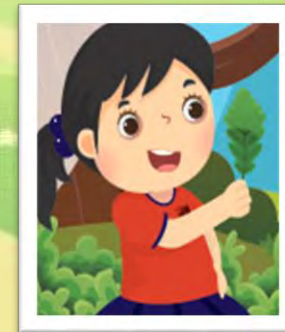
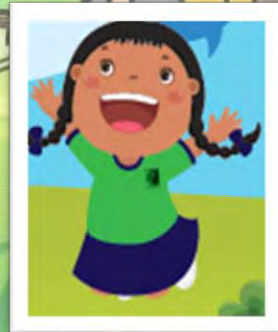
P3 VIA





Peiying Primary School

Home School Partnership



Building Character, Enriching Lives, Stretching Potential



Partnership

We hope to partner you in your child's development journey.

1. Knowing your child

2. Developing your child

3. Keeping in touch with the school





Partnership

Encourage Joy of Learning by

- not over-emphasising academic performance
- focus on your child's learning journey, rather than compare them to others

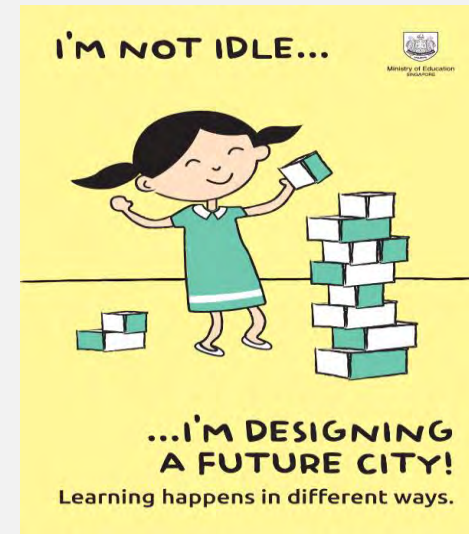
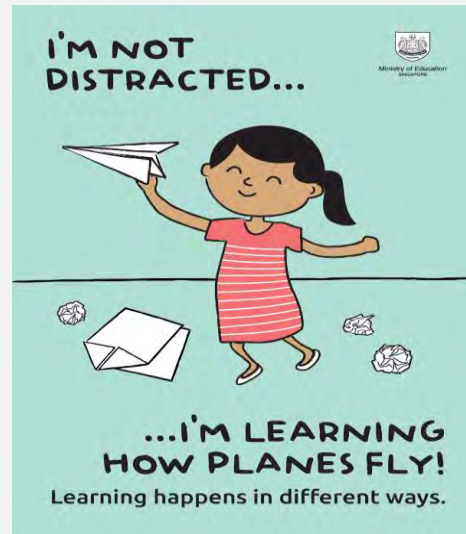




Partnership

With these changes, your child will

- have more time and space to deepen learning
- better enjoy the process of learning
- develop dispositions for lifelong learning





Partnership

Help to enhance your child's **mental & physical well-being** by;

- Guiding them in time management
- Getting them to follow routines
- Allowing them to learn to solve their problems



Response Time from Staff



For E-mail correspondence – 3-7-21 guideline applies

- **3 Days – Staff will reply within 3 days for straightforward matters**
- **7 Days – Staff will send a holding reply within 3 days for issues that require further investigation or consultation and respond within 7 to 21 days.**



Staff Well-Being

- Protect teacher's personal time
- Contact teachers during school hours only
- Via email or school phone



Wellbeing



Partnership

Parent Support Group (PSG)

- Add value to the education of our students through their involvement in school programmes and activities.
- Positive partnership among parents, teachers and the community to make the school a safe place for our students to learn in, making school life more vibrant and caring.



Partnership

Join our PSG

Time

- School programmes and events

Talent

- Volunteer of expertise, talents, individual interests or personal networks

Thoughts

- Brainstorm and contribute constructive feedback and ideas

<https://go.gov.sg/pypsg>



Financial Assistance

FAS

Singapore Citizens in financial need can get assistance from MOE on school fees and other expenses.

How do you qualify for MOE FAS?

1. Singaporean students studying in Government and Government-Aided primary and secondary schools, junior colleges, and Millennia Institute.
2. Monthly household income of up to \$3,000 or monthly household income per capita of up to \$750.

For more information on eligibility, please visit MOE website:

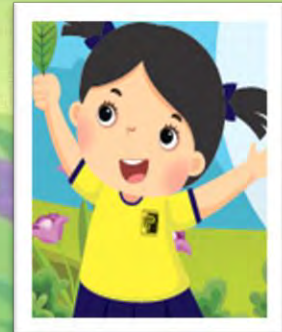
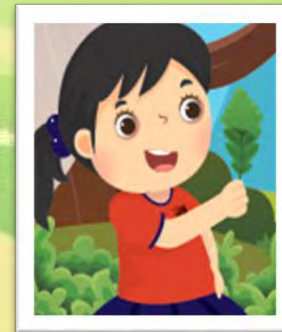
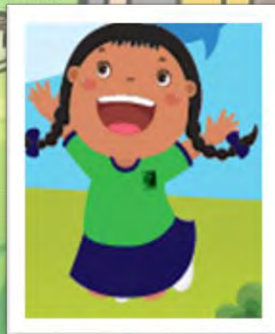
<https://www.moe.gov.sg/financial-matters/financial-assistance>





Peiying Primary School

Level Programmes



Building Character, Enriching Lives, Stretching Potential



Level Programmes

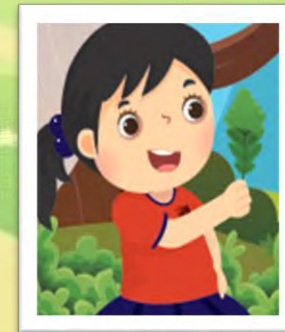
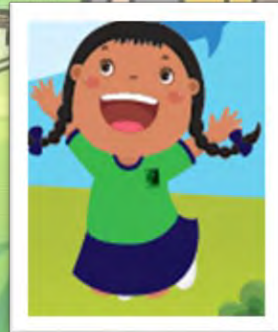
- Co-Curricular Activities (CCAs)
- Swimsafer (P3 & P5)
- Conversational Chinese and Malay Language (CCM)
- English Enrichment Programmes
- Applied Learning Programme (ALP)
- Learning Journey to Singapore Science Centre (Science)
- Harmony in Action Games with Saint Nicholas Girls' School (Citizenship & Character Education)





Peiying Primary School

Level Matters & SBB



Building Character, Enriching Lives, Stretching Potential



Level Matters

- **Learning with Technology**
- **Higher MTL for P3 & P4**
- **Subject Based Banding for P4**
- **Meet the Form & Co-Form Teachers**





Learning with Technology

Learning with Technology



In Peiyong Primary School, we aim to:

- develop confident digital user
- nurture self-directed learners
- develop engaged learners
- nurture resilient students



Learning with Technology

Login example for Primary One to Six students

Accounts	School Laptops	MIMS Portal	SLS
Name	Lim Wei Lin		
MIMS	lim_wei_lin@students.moe.edu.sg		
MIMS Portal Address	https://idp.mims.moe.gov.sg/		
Password	P1 - 2	Your child's teacher will guide your child to log in to their accounts during the ICT lesson	
	P3 - 6	Your child has been guided to change their password during the ICT lesson in week 1.	

Learning with Technology



Ministry of Education
SINGAPORE

MIMS Portal



Applications

Favorites



ICON
ICON Email



MIMS SSPR
MIMS Self Service Password
Reset



SLS
Student Learning System



Social Media



New Facebook Page



Instagram



Learning with Technology

- Activate parental controls on your home devices.



Google Family Link



Apple Screen time



MS Family Safety



Learning with Technology

- Model good digital habits for your child.
- Set ground rules for internet use.
- Navigate the internet together to understand their usage.



Image credit: educationdestinationasia.com



The POSB Smart Buddy Programme

- Launched in Aug 2017, the POSB Smart Buddy Programme is the **world's first in-school wearable tech Programme** to enable a contactless payments ecosystem to help cultivate sensible saving and spending habits amongst young students.
- The POSB Smart Buddy Programme has since **received more than 10 international awards and accolades** for innovation, seamless digital payments and excellent customer banking experience.
- It has an **accompanying Smart Buddy mobile app** that allows parents to remotely manage their children's spending, savings and even set saving goals for their children, thereby helping their children cultivate saving habits in a digital and interactive way.
- The POSB Smart Buddy Programme also supports students who **receive school meal subsidies**, providing a **unified payment solution for every student**.
- The current Smart Buddy NETS payment terminals in schools accept the following cards:

Smart Buddy Card/ Watch ¹



School Smartcard/ EZ-Link Card ²



POSB/ DBS ATM Cards (with NETS Contactless logo)



NETS Pre-Paid Card (NPC)



NETS FlashPay



Home Team NS PASSion POSB Debit Card ³



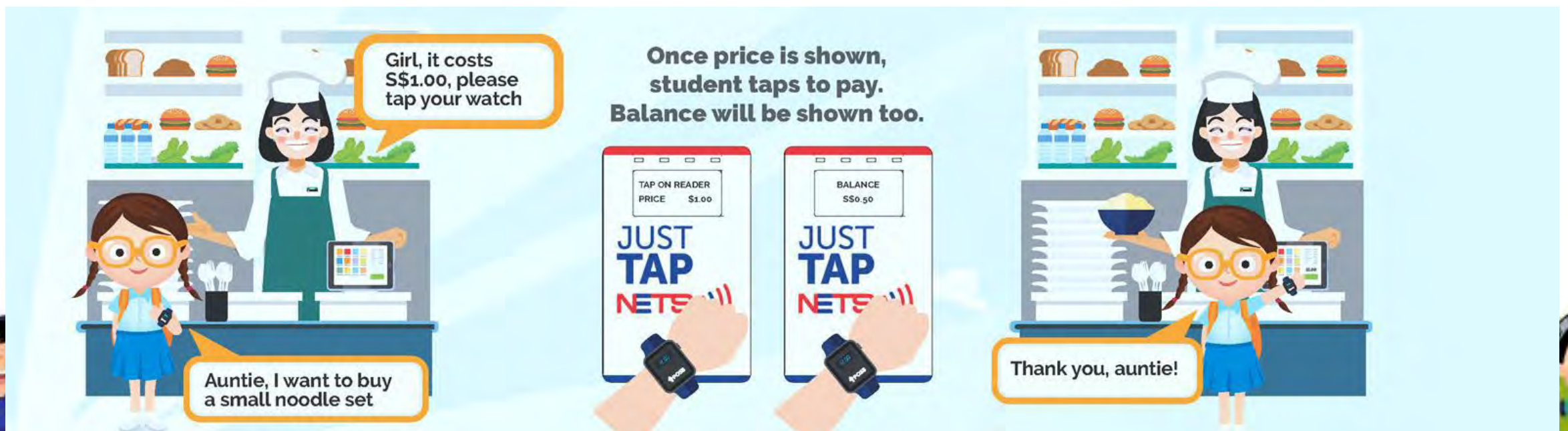
POSB PASSion Card (with NETS Contactless logo)



¹ Parent must have DBS/ POSB bank account
PAS 2.0 cards currently

The POSB Smart Buddy Programme

- With the growing adoption of e-payment in recent years, it would only be a matter of time for e-payment options to be introduced in schools. In fact, students are already exposed to e-payments on a daily basis (e.g., EZ-Link cards for transport and retail purchases).
- All MOE Schools will be invited to come onboard the programme progressively over the next 3 years.
- E-payment is optional, and cash will continue to be accepted.
- Students under Financial Assistance Scheme(FAS) will continue to receive their meal subsidies as per normal. (No changes)



What can you do with POSB Smart Buddy?



For Parents:

Activate and manage your child's Smart Buddy with the mobile app.

Features

- ✔ Manage daily allowance
- ✔ Monitor expenses/savings
- ✔ Set savings goal
- ✔ Create 'Child Access'
- ✔ Link School Smartcard/ EZ-Link Card



For Students:

Tap to pay at the school canteen, school bookshop or any retailers which accepts **NETS** payments.

Note: The Smart Buddy card/ watch is not recommended for public transport. All transit usage will be priced at full adult fare.

Features

- ✔ Tap and Pay
- ✔ Enjoy 10% bonus with Smiley Stamps
- ✔ Set Savings Goal
- ✔ Develop good saving habits



+ Smart Buddy Watch (optional)

Features

- ✔ Date/Time
- ✔ Nickname
- ✔ Fitness Tracker
- ✔ Heart Rate Tracker
- ✔ Reminders



****More information will be posted via Parents Gateway. Please do look out for the announcement****

Benefits to Schools

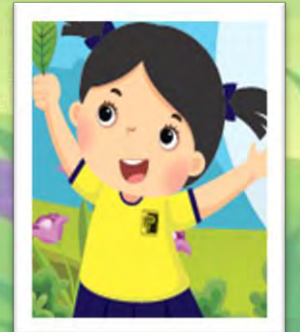
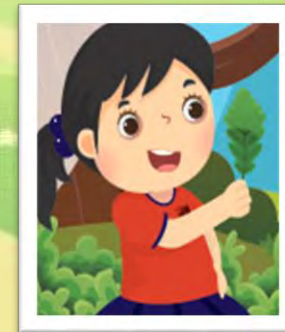
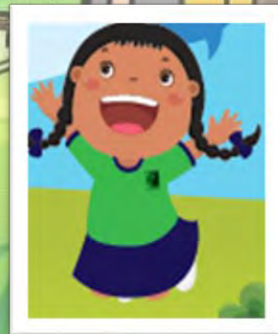
- ✔ Minimize cash handling
- ✔ Access to transaction data
- ✔ Manage and disburse school meal subsidies





Peiying Primary School

Higher MFL for P3 & P4



Building Character, Enriching Lives, Stretching Potential

What is the Purpose of Offering HMTL?

Higher Mother Tongue Language (HMTL) has been officially offered at P5 and P6 since 1992 for students who showed strong proficiency and interest in Mother Tongue Language (MTL).

To further strengthen the learning of MTL from an early age, primary schools can offer HMTL across the 3 official MTLs from P3 onwards starting 2022.



What is P3 and P4 Higher HMTLs?

It is designed to enthuse P3 and P4 students who demonstrate the ability and interest to develop higher levels of MTL language proficiency and cultural knowledge.



What is the Criteria?

1

For P3 entry:

The school will use a set of qualitative descriptors (QDs) based on the P2 Mother Tongue Languages Learning Outcomes to determine students' MTL proficiency. Students offering HMTL at P3 and P4 should **be proficient in their oracy skills** and **demonstrate strong foundation for literary skills**.



What is the Criteria?

2

Evidence of **students' performance** throughout the year

Gathered information about students' learning through checkpoints such as on-going assessments or alternative assessments to further provide information on students' learning progress and inclination.

3

Teachers' feedback and observations

To cover a whole range of performance, additional information about student's learning can be gathered from class discussions, class work and homework.



Key Features of P3 & P4 HMTL Curriculum

- Built on existing MTL curriculum:
- Sustain students' interest and deepen their knowledge in their MTL
- Enhance Reading and Writing skills
- Expose students to age-appropriate literary texts

Literary-based text. Incorporation of age-appropriate literary-based text to provide an enjoyable early experience to ethnic literature.

Exposure to higher-order thinking exercises e.g. Enhance reasoning skills by eliciting students' response during classroom activities and discussions; Construction of new knowledge by making meaningful connections between texts and students' lives.

Creative and fun-filled activities and games to teach language and cultural knowledge. To sustain interest and extend knowledge.



How are lessons carried out for HMTL at P3 and P4 level?

MOE recommends 2 additional periods per week for HCL

For HCL

For HCL, the textbook includes literary-based texts which would require **two additional periods** per week outside curriculum time to provide an enjoyable early experience to ethnic literature and cultural knowledge.

For HML or HTL

For HML and HTL at P3 and P4, school will **adopt differentiated instruction** in a mixed ability class during curriculum time.



How would assessment look like for HMTL at P3 and P4 level for my child?

HMTL at P3 and P4 will be reflected as a non-weighted assessment. Non-weighted assessment refers to assessments where the scores will not form part of the computation of a student's overall results in a subject for the year. There will be no changes in the major exams.

The schools would also indicate your child's progress in HMTL in the Holistic Development Profile.



Can my child still offer HMTL at upper primary levels even if he/she did not offer it at P3 and P4 level?

Your child could still offer HMTL at P5 and P6 level when he/she builds stronger proficiency and interest. The offering of HMTL from P3-P5 is a parental option whereas the offering of HMTL at P6 is a school-based decision. You are strongly encouraged to discuss with the school which course best suits the need of your child.



If my child decides to discontinue with HMTL during P3 or P4, will he/she be allowed to drop out?

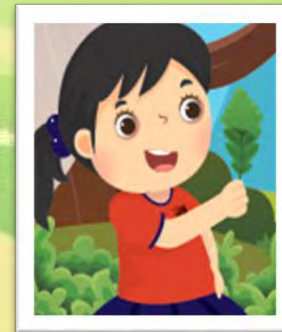
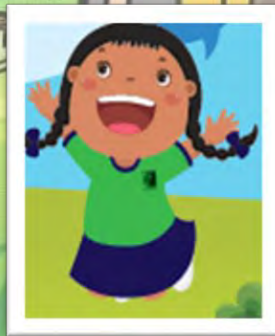
To truly benefit from the HMTL curriculum at P3, he/she should offer HMTL for at least two years to ascertain his/her ability to cope with it. If the child really finds difficulty coping, he/she can drop HMTL anytime.





Peiying Primary School

SBB for P4



Building Character, Enriching Lives, Stretching Potential

For Primary Schools

SUBJECT-BASED BANDING

Catering to Your Child's Abilities



Primary 4



Rationale for Subject-based Banding (SBB)

- **Every child is unique**, and has different aptitudes, capabilities and talents.
- SBB allows **greater flexibility for students to take subjects at different levels** depending on their aptitudes and abilities in these subjects.



How Subject-based Banding works

At the end of Primary 4

School recommends a subject combination based on the student's results.
Parents fill up an option form indicating preferred combination.

At Primary 5

Your child takes subject combination chosen by parents
English, Math, Science and Mother Tongue are available at standard and foundation level.
Mother Tongue is also available at the higher level.

At the end of Primary 5

School decides on the subject combination based on the student's results.

At Primary 6

Your child takes subject combination decided by the school

How Subject-based Banding works

End of Primary 5

End of Primary 5	
Takes standard subjects and has difficulty coping	Takes standard subjects and is coping well
School may allow child to take 1 or more subjects at foundation level at Primary 6	School will allow child to continue the same subject combination in Primary 6



How Subject-based Banding works

At Primary 6

Your child takes subject combination decided by the school



End of Primary 6

Your child sits for the Primary School Leaving Examination (PSLE)



Note :

- Parents can only exercise their option once at the end of Primary 4.
- Subject combination from Primary 5 to Primary 6 will be determined by the school in the best interest of the child.



Higher Mother Tongue Language

WHAT ARE SOME CHOICES AVAILABLE?

If your child (for P4 exam)	Your child may be recommended to take
Passes all 4 subjects and performs very well in Mother Tongue Language	4 standard subjects + Higher Mother Tongue Language
Passes all 4 subjects	4 standard subjects
Passes 3 subjects	4 standard subjects
Passes 2 subjects or less	4 standard subjects; or 3 standard subjects + 1 other foundation subject; or 2 standard subjects + 2 other foundation subjects; or 1 standard subject + 3 other foundation subjects; or 4 foundation subjects

Source: MOE Website <https://beta.moe.gov.sg/primary/curriculum/subject-based-banding/>



Higher Mother Tongue Language

- At the end of Primary 5, only students with **AL4 (75-79 marks) or better** for MTL and pass HMTL continue to take HMTL .



FAQs

Frequently Asked Questions



Q: If my child scores Band 1 for MTL, but Band 2 for all other subjects, should I opt for Higher Mother Tongue?

Let's consider this:

Achievement Bands for Primary 4

Band	Mark Range	Brief Description
1	85 to 100	Is very good at the subject
2	70 to 84	Is good at the subject
3	50 to 69	Has adequate grasp of the subject
4	Below 50	Has not met the minimum requirements for the subject

Subject	Marks	Band
English	84	Band 2
Mother Tongue Language	85	Band 1
Mathematics	84	Band 2
Science	84	Band 2

FAQs

Frequently Asked Questions



Let's consider this:

Subject	Marks	Band
English	84	Band 2 (AL 3)
Mother Tongue Language	85	Band 1 (AL 2)
Mathematics	84	Band 2 (AL 3)
Science	84	Band 2 (AL 3)

REFERENCE RAW MARK RANGES

AL	RAW MARK RANGE
1	≥ 90
2	85 – 89
3	80 – 84
4	75 – 79
5	65 – 74
6	45 – 64
7	20 – 44
8	< 20

Total AL: 11

FAQs







Frequently Asked Questions



Q: Is taking Higher Chinese Language an advantage for my child to have a better chance at getting into the secondary school that he wants?

Let's consider this:

WHO WILL GET IN FIRST?





1st		7	NO HCL
2nd		8	DISTINCTION
3rd		8	MERIT
4th		8	PASS
5th		8	NO HCL
6th		9	DISTINCTION

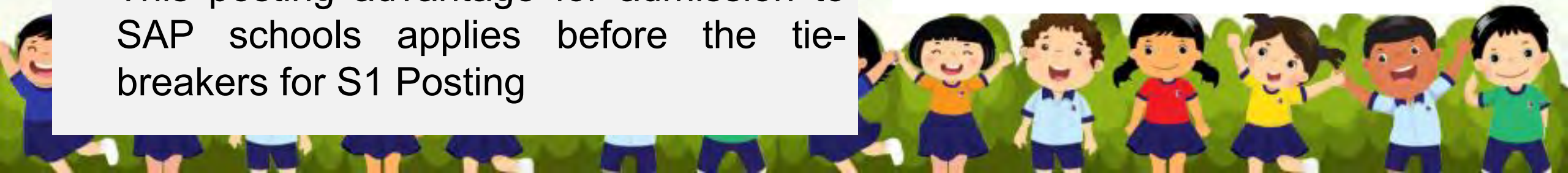


POSTING ADVANTAGE

- Higher Chinese Language (HCL) students will continue to receive a posting advantage for admission to **SAP schools**.
- For example, if 2 students have a PSLE Score of 8, the student who has a Distinction in HCL will be allocated a place in a SAP school ahead of a student who has a Merit in HCL.
- This posting advantage for admission to SAP schools applies before the tie-breakers for S1 Posting

WHO WILL GET IN FIRST?

1st	 7	NO HCL
2nd	 8	DISTINCTION
3rd	 8	MERIT
4th	 8	PASS
5th	 8	NO HCL
6th	 9	DISTINCTION



FAQs

Frequently Asked Questions



Q: I feel that my child is very weak in Mathematics. He/She scored only 25 marks in P4. Should I opt for Foundation Mathematics?

Let's consider this:

Achievement Bands for Primary 4

Band	Mark Range	Brief Description
1	85 to 100	Is very good at the subject
2	70 to 84	Is good at the subject
3	50 to 69	Has adequate grasp of the subject
4	Below 50	Has not met the minimum requirements for the subject

Subject	Marks	Band
English	70	Band 2
Mother Tongue Language	84	Band 2
Mathematics	25	Band 4
Science	69	Band 3

FAQs

Frequently Asked Questions



Let's consider this:

Subject	Marks	Band
English	70	Band 2 (AL 5)
Mother Tongue Language	84	Band 2 (AL 3)
Mathematics	25	Band 4 (AL 7)
Science	69	Band 3 (AL 5)

REFERENCE RAW MARK RANGES

AL	RAW MARK RANGE
1	≥ 90
2	85 – 89
3	80 – 84
4	75 – 79
5	65 – 74
6	45 – 64
7	20 – 44
8	< 20

Total AL: 20

FAQs

Frequently Asked Questions



Foundation LEVEL SUBJECT grades

- For the purpose of S1 posting, Foundation level AL A to AL C will be mapped to AL 6 to AL 8 of Standard level subjects respectively, to derive a student's overall PSLE Score.
- Similar to the current PSLE scoring system, this mapping is based on the learning and assessment load of the subjects, and informs students of their readiness to access the curriculum at the secondary level.

Foundation Level AL Reflected on Result Slip	Foundation Raw Mark Range	Equivalent Standard Subject AL	Standard Raw Mark Range
A	75 – 100	6	45-64
B	30 – 74	7	20-44
C	< 30	8	<20

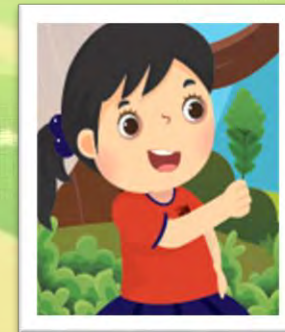
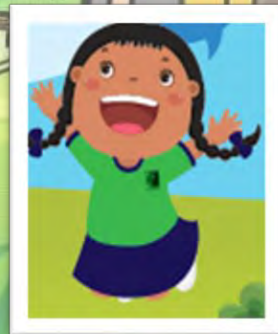
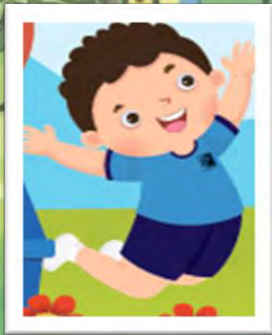
AL	RAW MARK RANGE
1	≥ 90
2	85 – 89
3	80 – 84
4	75 – 79
5	65 – 74
6	45 – 64
7	20 – 44
8	< 20





Peiying Primary School

Meet The Form & Co-Form Teachers



Building Character, Enriching Lives, Stretching Potential



THANK YOU!

